



The Leader in Industrial Magnetic Filtration

PROBLEM:

Black Powder wear contamination in reclaimed oil was gravity fed to the high pressure flash tanks, the de-mister sections of compressors and finally the coalescer.

- (1) Traditional filtration prior to the compressor sump is unable to efficiently filter Black Powder. This wear contamination damages seals, pump components and compressor components which requires costly, frequent maintenance.
- (2) Traditional filtration bypasses the bulk of Black Powder solids when it reaches saturation.

TEST:

- 1. Install the OEI Magnetic Filter in a drain line in the discharge.
- 2. Route the hose to a vent in the destination tank.
- 3. Record results after 3 minutes, 10 minutes and 1 hour.

RECOMMENDATIONS:

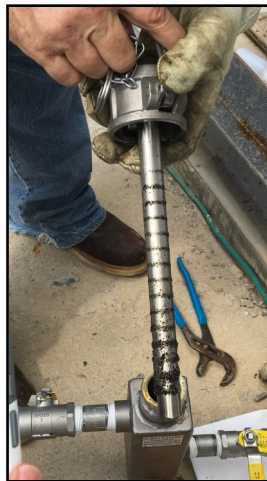
Install an OEI Magnetic Filter on this system to clean the reclaimed oil before it returns to the compressor. As a further preventative measure, it is recommended to also install a Black Powder Solutions Magnetic Separator on the feedstock line into the facility, thereby protecting all systems in the process.

PROOF OF CONCEPT CASE STUDY

Reclaimed Oil Tank Separator
Targa Resources
Texas, October 2016



Reclaimed oil tank.



Black Powder contamination captured after 3 minutes.



Black Powder contamination captured after 10 minutes.



Contamination caught after 1 hour.